

43m - 1.300kg

38m - 1.600kg

35m - 1.800kg

31m - 2.100kg

26m - 2.400kg

23m - 2.500kg

I

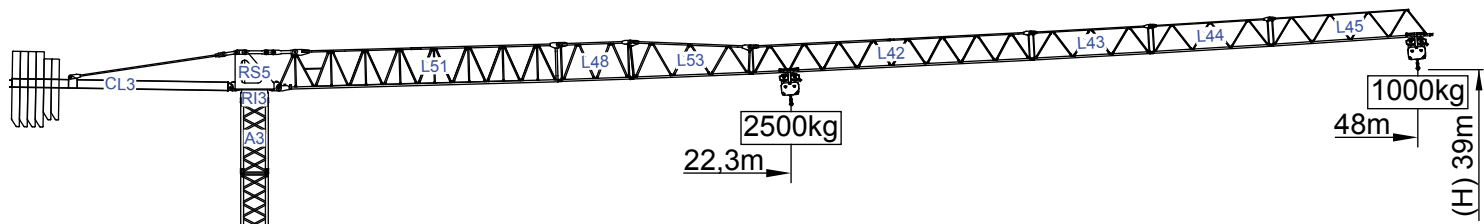
II

III

IV

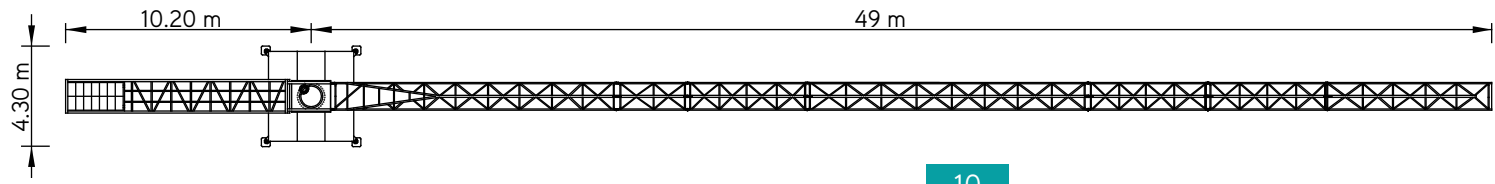
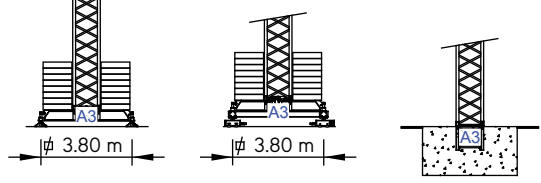
V

VI



Cargas.Loads.Lasten.Charges.Cargas.Carichi.Yükler. ГРУЗОПОДЪЕМНОСТЬ

Icon	Length (m)	Jib Configuration	Kg/m M/KT 2500	Kg	Capacity (kg)						
					23	26	31	35	38	43	48
	48m	L51+L48+L53+L42 L43+L44+L45	22,3 m		2410	2100	1710	1480	1340	1150	1000
	43m	L51+L48+L53+L42 L43+L45	24,6 m		2500	2350	1920	1670	1510	1300	
	38m	L51+L48+L53+L42 L45	25,8 m		2500	2480	2030	1760	1600		
	35m	L51+L53+L42+L45	26,3 m		2500	2500	2070	1800			
	31m	L51+L48+L53+L43 L45	26,7 m		2500	2500	2100				
	26m	L51+L48+L53+L45	25,1 m		2500	2400					
	23m	L51+L48+L45	23 m		2500						



SGT4810TL

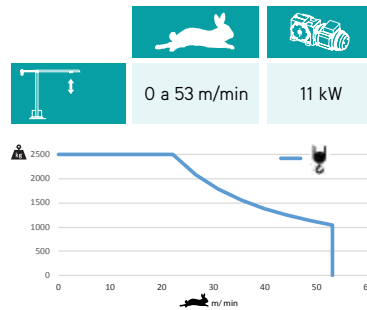
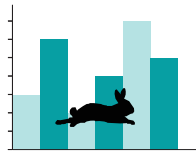
SGT 4810TL

48m - 1.000kg

2.500Kg

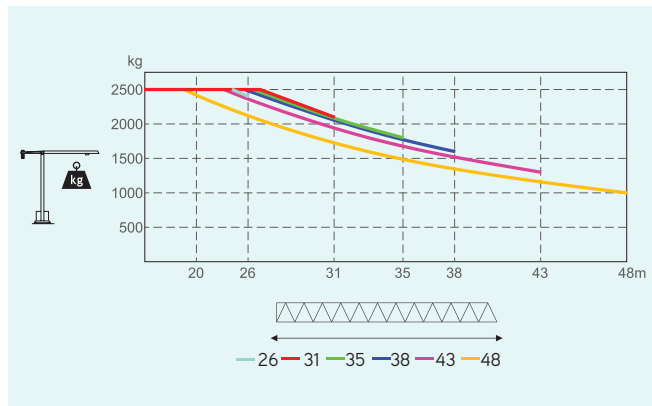
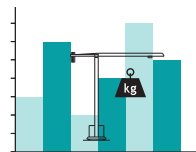
Características . Characteristics . Eigenschaften
Caractéristiques . Characteristics . Caratteristiche
Özellikler . ХАРАКТЕРИСТИКИ

	0 a 1 r.p.m. 2x4 daN.m
	0 a 50 m/min 1,5 kW
	15 m/min 2x3 kW



	26 kVA
	400 V +- 5% (50/60 Hz)

Velocidade de elevação . Hoisting speed . Hubgeschwindigkeit . Vitesse d'élevation .
Velocidad de elevación . Velocità di sollevamento . Kaldırma hızı (m/min) .
Скорость подъема (м/мин)



Elementos . Parts . Teile . Éléments . Elementos . Elemento . Parçalar . ЭЛЕМЕНТЫ

		A (mm)	B (mm)	C (mm)	kg	Code
L51		11950	1300	2250	2900	530 48 10
L48		3190	1160	1650	350	
L53		5200	1160	1650	510	
L42		11820	1160	1210	820	
L43		5100	1160	1210	260	
L44		5100	1160	1210	230	
L45		6800	1160	1210	290	
RS5 RI3		2150	1320	2200	2800	
CL3		9350	1380	560	2000	
CP1		1160	320	2530	2x1500 3000	
CP2		1160	330	3140	4x2000 8000	704 20 00
TOTAL					21160	
A3		11985	1180	1180	2450	504 12 00
A3		6075	1180	1180	1300	504 06 00
A3		3120	1180	1180	720	504 06 01
A3		3120	1385	1385	810	504 06 03
A3		1200	1160	1160	350	504 06 02
A3		5525	500	635	1075	604 00 01
A3		2670	360	635	2x535 1070	
TOTAL					2145	