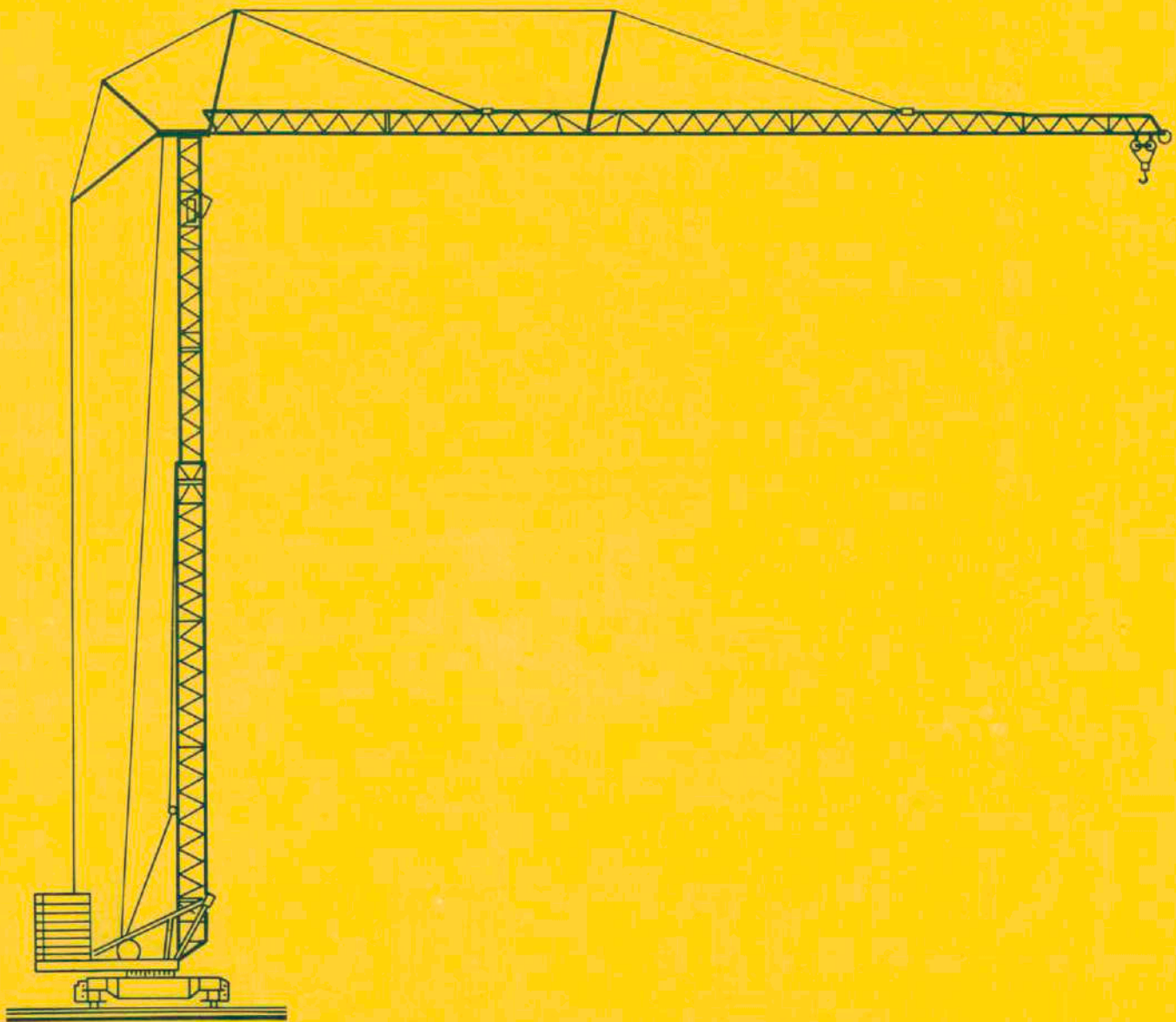


GMR 218B



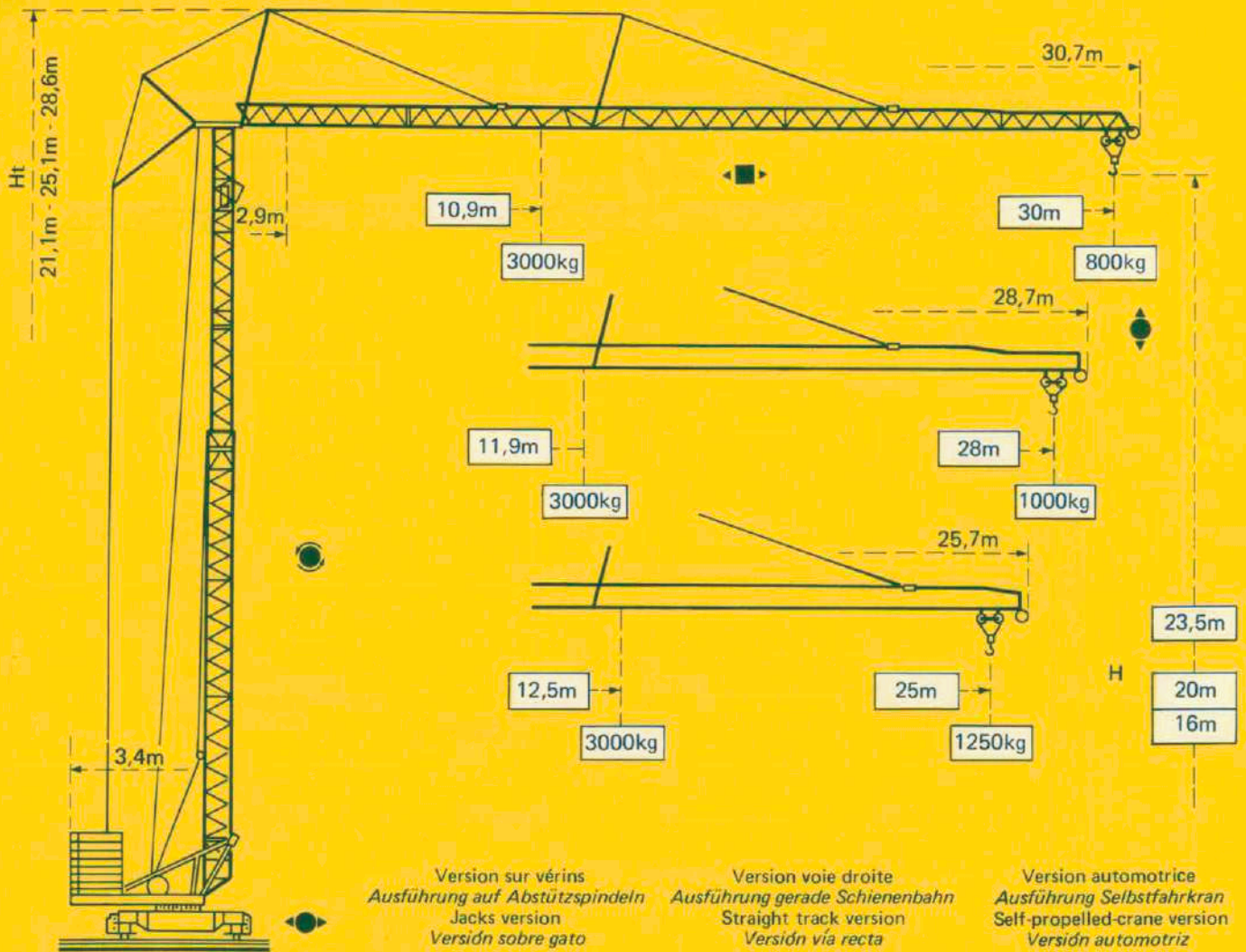
**GMR 218B**

**Potain**

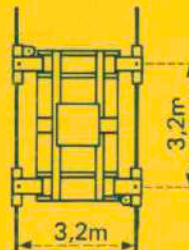
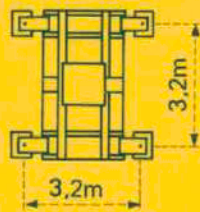


# Potain GMR 218B

Cotes Abmessungen Dimensions Dimensiones



F1



F1 = Réactions Eckdrücke Reacciones Reacciones

F1	● 184 kN	■ 123 kN
	12,3 t	

- En service
- Hors service

A vide sans lest ni train de transport, avec flèche et hauteur maximum.

- In Betrieb
- Ausser Betrieb

Ohne Last, Ballast und Transportachse, mit Maximalausleger und Maximalhöhe.

- In service
- Out of service

Without load, ballast or transport axles, with maximum jib and maximum height.

- En servicio
- Fuera de servicio

Sin carga, sin lastre, ni tren de transporte, flecha y altura maximas.




# Courbes de charges Lastkurven Load curves Curvas de cargas

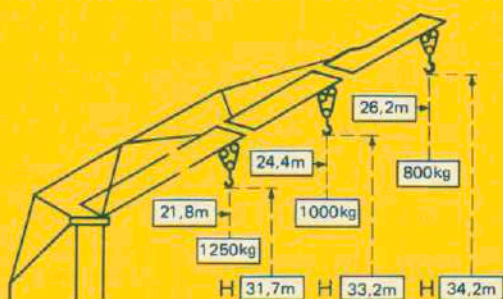
 Flèche Ausleger Jib Flecha

2,9 → 10,9	12	14	16	18	20	22	24	26	28	30	m	
30m 	3000	2670	2190	1850	1590	1390	1220	1090	980	880	800	kg

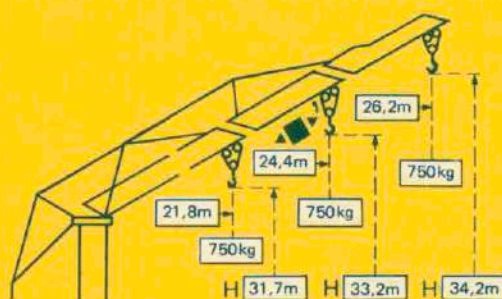
2,9 → 11,9	12	14	16	18	20	22	24	26	28	m	
28m 	3000	2970	2450	2070	1780	1560	1380	1230	1100	1000	kg

2,9 → 12,5	13	15	17	19	21	23	25	m	
25m 	3000	2860	2390	2040	1780	1570	1390	1250	kg

## Flèche relevée Ausleger in Steilstellung Raised jib Flecha izada



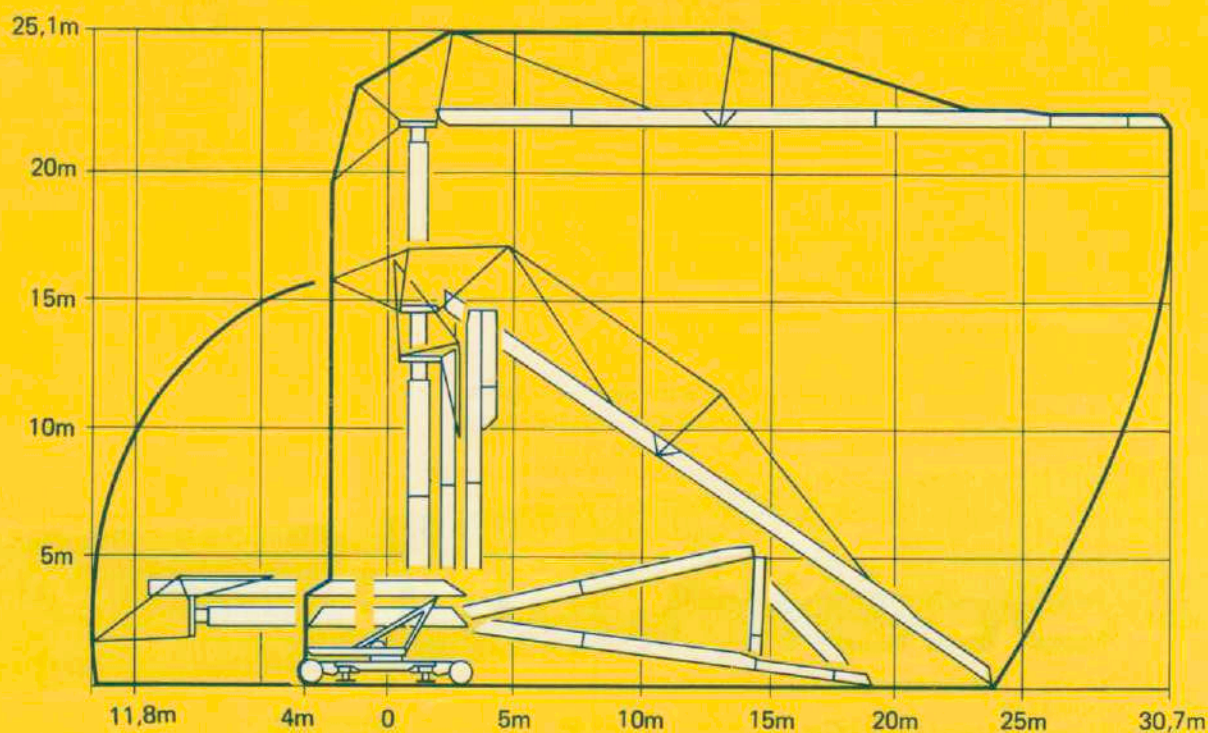
Chariot bloqué (version standard)  
 Verriegelte Laufkatze (Standardausführung)  
 Trolley locked (standard crane)  
 Carro bloqueado (versión standard)



Chariot distributeur (option usine)  
 Verfahrbare Laufkatze (Sonderausführung ab Werk)  
 Traversing trolley (plant option)  
 Carro distribuidor (opción de fábrica)

 RC 31  
 37m/min  
 ch-PS-hp  
 3kW

## Montage Montage Erection Montaje





















Mécanismes

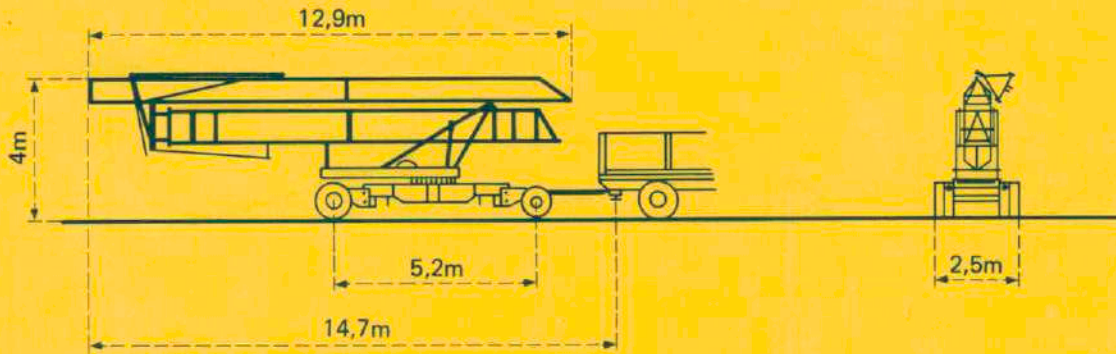
Antriebe

Mechanisms

Mecanismos

				m/min.	kg	ch-PS hp	kW
Levage Heben Hoisting Elevación	PC15A 			6	1500	3,4	2,5
				25	1500	15	11
				50	1000		
				3	3000	3,4	2,5
				12,5	3000	15	11
				25	2000		
Distribution - <i>Katzfahren</i> Trolleying - <i>Distribución</i>		DV 31	31,5		4	2,9	
		RC 31	37				
Orientation - <i>Schwenken</i> Slewing - <i>Orientación</i>		RCO 20	0,3 - 1 tr/min U/min-rpm		3	2,2	
Translation - <i>Kranfahren</i> Travelling - <i>Traslación</i>		TVD 323	31		2 x 3	2 x 2,2	
Puissance électrique nécessaire Anschlusswert Necessary electric power Potencia eléctrica necesaria	380 V 50 HZ 	Réseau - <i>Netzstrom</i> - Mains supply - <i>Red</i>			20 kVA		
		Groupe électrogène - <i>Stromaggregat</i> Generator set - <i>Grupo electrogeno</i>			Nous consulter <i>Auf Anfrage</i> Consult us <i>Consultarnos</i>		

Transport *Transport* *Transport* *Transporte*



Version tractée derrière camion  
*Ausführung als LKW-Anhänger*  
 Lorry towed version  
*Versión remolcable detrás de un camión*

DIN 15018 H1 B3

 **Potain**

18, rue de Charbonnières B.P 173 - F 69130 ECULLY  
 Tél. (7) 833.81.81 Télex 330 179  
 EXPORT. 89 Av. du Pdt Roosevelt - CHEVILLY - LARUE  
 F 94150 RUNGIS - Tél. (1) 687.22.23 - Télex 270001  
 POTAIN GmbH - D 6082 MÖRFELDEN - WALLDORF  
 Nordendstr. 79-87 - Postfach 420 - Tel. (6 105) 5091 - Telex 4 185745  
 POTAIN SUISSE S.A. - CH 5115 MÖRIKEN WILDEGG  
 Tel. 64.53.19.91 - Telex 68294