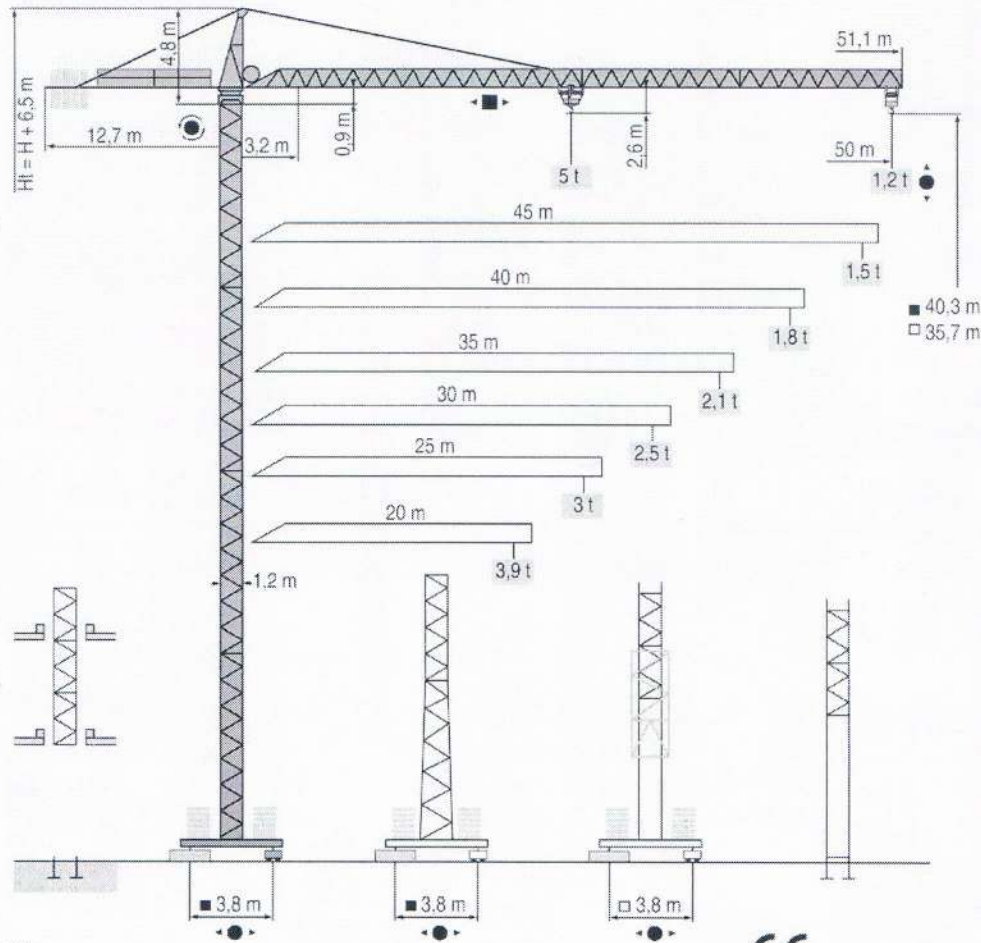


CARACTERÍSTICAS TÉCNICAS

CITY CRANE MC 85 A



LOM 1

CE FEM 1.001-A3

- HD
HDM
- HDT
- GTMR
- CITY CRANE
- TOPKIT MD
MAXI MD
- MAXI TOPKIT
- Topless MDT
- MR

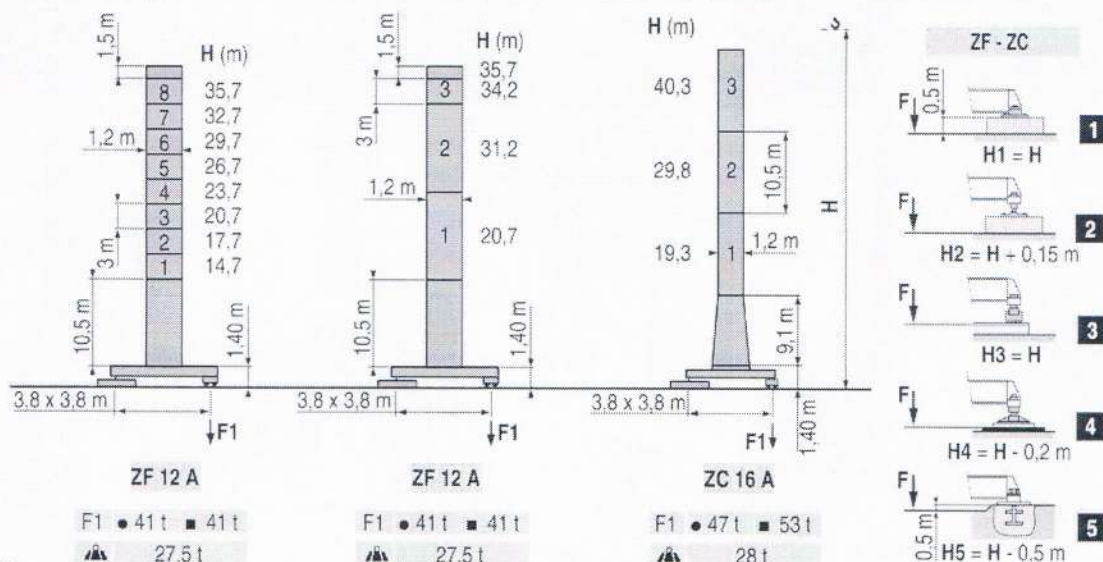
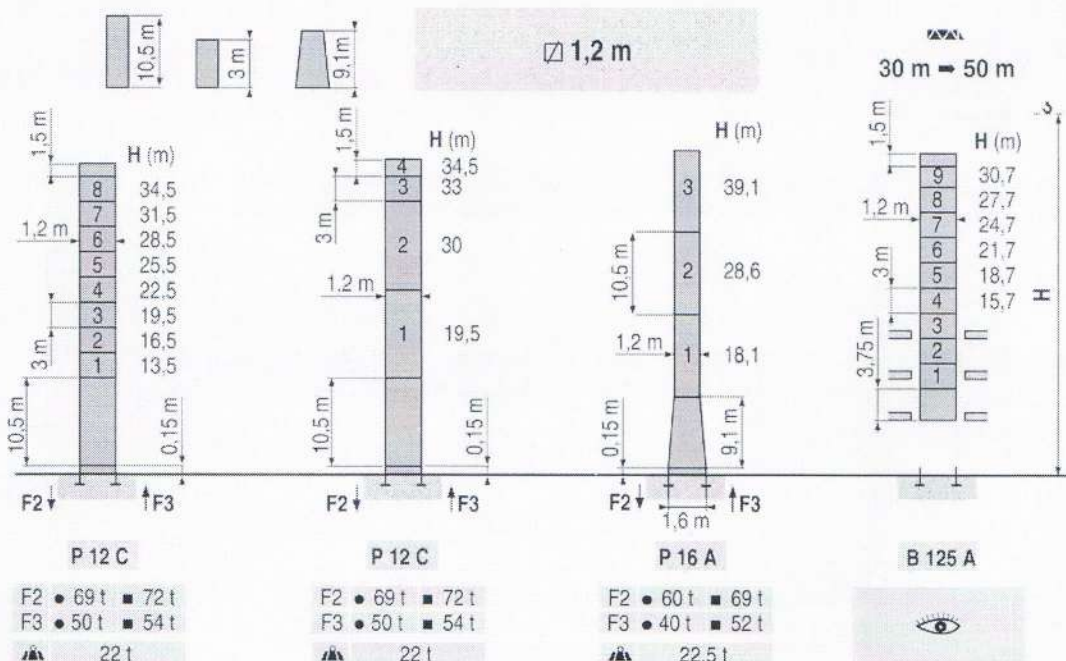


POTAIN

Mat / Réactions
Maste / Eckdrücke

Masts / Reactions
Mástil / Reacciones

Torre / Reazioni
塔身 / 反力

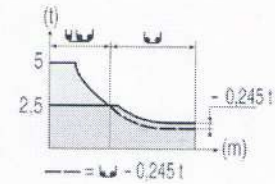
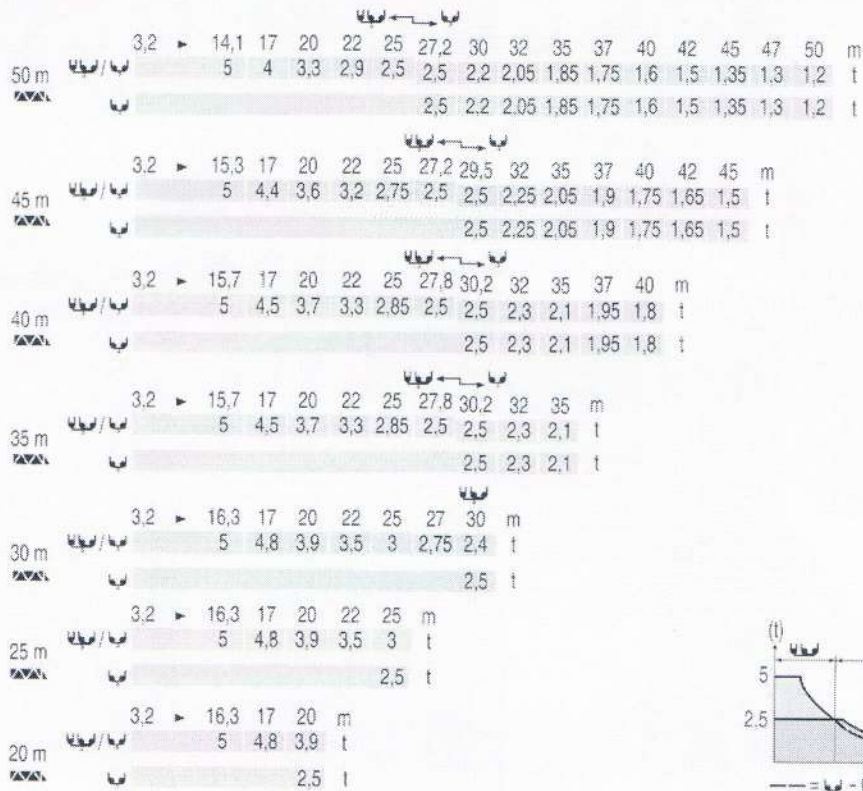


- Voir télescopage sur dalles
- Réactions en service
- Réactions hors service
- A vide sans lest avec flèche et hauteur maximum.
- Siehe Kletterkrane im Gebäude
- Reaktionskräfte in Betrieb
- Reaktionskräfte außer Betrieb
- Ohne Last und Ballast mit Maximalausleger und Maximalhöhe.
- See climbing crane
- Reactions in service
- Reactions out of service
- Without load and ballast with longest jib and maximum height.
- Consultare gru in cavedito
- Reazioni in servizio
- Reazioni fuori servizio
- A vuoto senza zavorra e con braccio massimo e altezza massima.
- 見楼板顶升
- 工作状态下的反应
- 非工作状态下的反应
- 空载, 无配重, 起重臂和高度均为最大值

Courbes de charges
Lastkurven

Load diagrams
Curvas de cargas

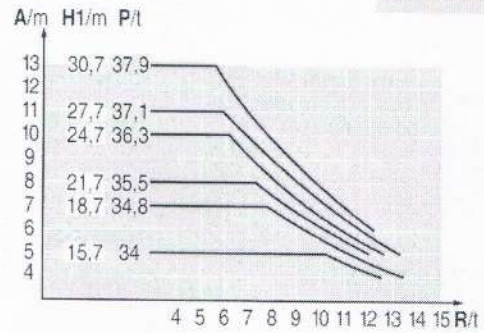
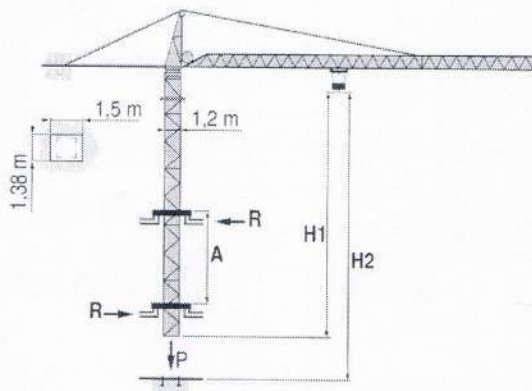
Curve di carico
负荷曲线



Télescopage sur dalles
Kletterkrane im Gebäude

Climbing crane
Telescopage gruas trepadoras

Gru in cavedio
楼板上顶升



LOM 1

A Distance entre cadres
H1 Hauteur grue
P Poids de la grue (en service)
R Réaction horizontale

A Distance between collars
H1 Crane height
P Crane weight (in service)
R Horizontal reaction

A Distanza fra i telai
Altezza gru
Peso della gru (in servizio)
Reazione orizzontale

A Abstand zwischen den Rahmen
H1 Kranhöhe
P Krangewicht (in Betrieb)
R Horizontalkräfte

A Distancia entre marcos
Altura grúa
Peso de la grúa (en servicio)
Reaccion horizontal

各附着框之间距离
工作状态下塔机高度
工作状态下塔机重量
水平反力

CITY CRANE MC 85 A

POTAIN